



New England Fishery Management Council

Announcement

FOR IMMEDIATE DISTRIBUTION
October 7, 2010

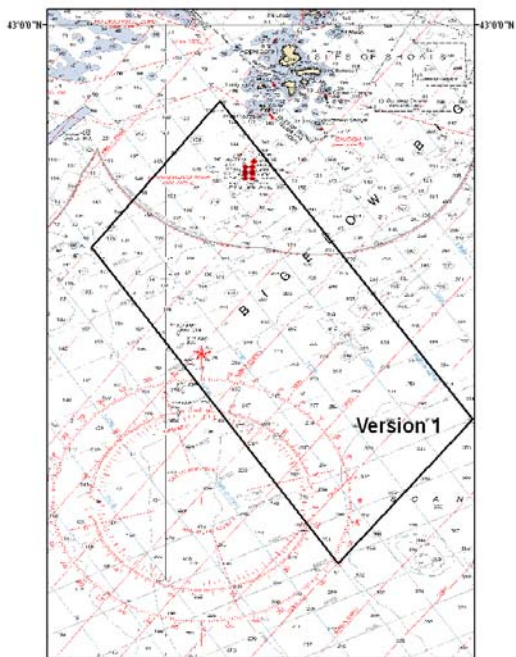
Contact: Anne Hawkins
978.465.0492, ext. 35

RECREATIONAL FISHERMEN NOTICE OF PUBLIC INFORMATIONAL MEETINGS

An area in the Gulf of Maine is being proposed to protect spawning aggregations of Gulf of Maine cod. The action could limit fishing at times and in areas when cod catch rates are high, by reducing opportunities to target large spawning fish and by preventing fishing from interfering with spawning activities.

October 19, 2010 from 6-8 p.m. – Urban Forestry Center, 45 Elwyn Road, Portsmouth, NH

October 21, 2010 from 6-8 p.m. – Parker River NWR Visitor Center, 6 Plum Island Tpk, Newburyport, MA



The New England Fishery Management Council will conduct two public informational meetings to describe the measures being considered to limit commercial and recreational fishing activities in an area just south of the Isles of Shoals, referred to as “Whaleback”, where large cod are heavily targeted by both groups of fishermen. Council staff will provide details about the specific management measures proposed for inclusion in Framework Adjustment 45 to the Northeast Multispecies Fishery Management Plan. The Council is intending to finalize this measure at its meeting on November 16-18 in Brewster, MA.

There will be a question and answer period. Anyone wishing to submit individual comments to the Council should provide them in writing or attend an upcoming Groundfish Committee meeting or the full Council meeting in November. See the Council’s website www.nefmc.org for further information about submitting comments and the meeting schedule.

Directions to Urban Forestry Center:

From Interstate 95 North/South: take Exit 5 to the Portsmouth Traffic Circle. From the Circle, take Route 1 Bypass South. This will merge into Route 1 South. Proceed about 2 miles thru a series of five lights. At the next set of lights you should be in the left turn only lane (Market Basket will be on your right). Turn left onto Elwyn Road. Take the first left turn (approximately 500 feet) into the Urban Forestry Center road to the parking lot.

Directions to Parker River National Wildlife Refuge Visitor Center:

The visitor center is located ~35 miles north of Boston near the City of Newburyport. From Route 95 take exit 57 and travel east on Route 113, then continue straight onto Route 1A South to the intersection with Rolfe’s Lane for a total of 3.5 miles. Turn left onto Rolfe’s Lane and travel 0.5 miles to its end. Turn right onto the Plum Island Turnpike. The visitor center is on the right (directly across the street from the Massachusetts Audubon Joppa Flats Education Center).